

12200 Bermuda Rd.,
Henderson, NV 89044



BERMUDA INDUSTRIAL CENTRE

CLASS A INDUSTRIAL FACILITY
± 42,621 SF AVAILABLE



CBRE



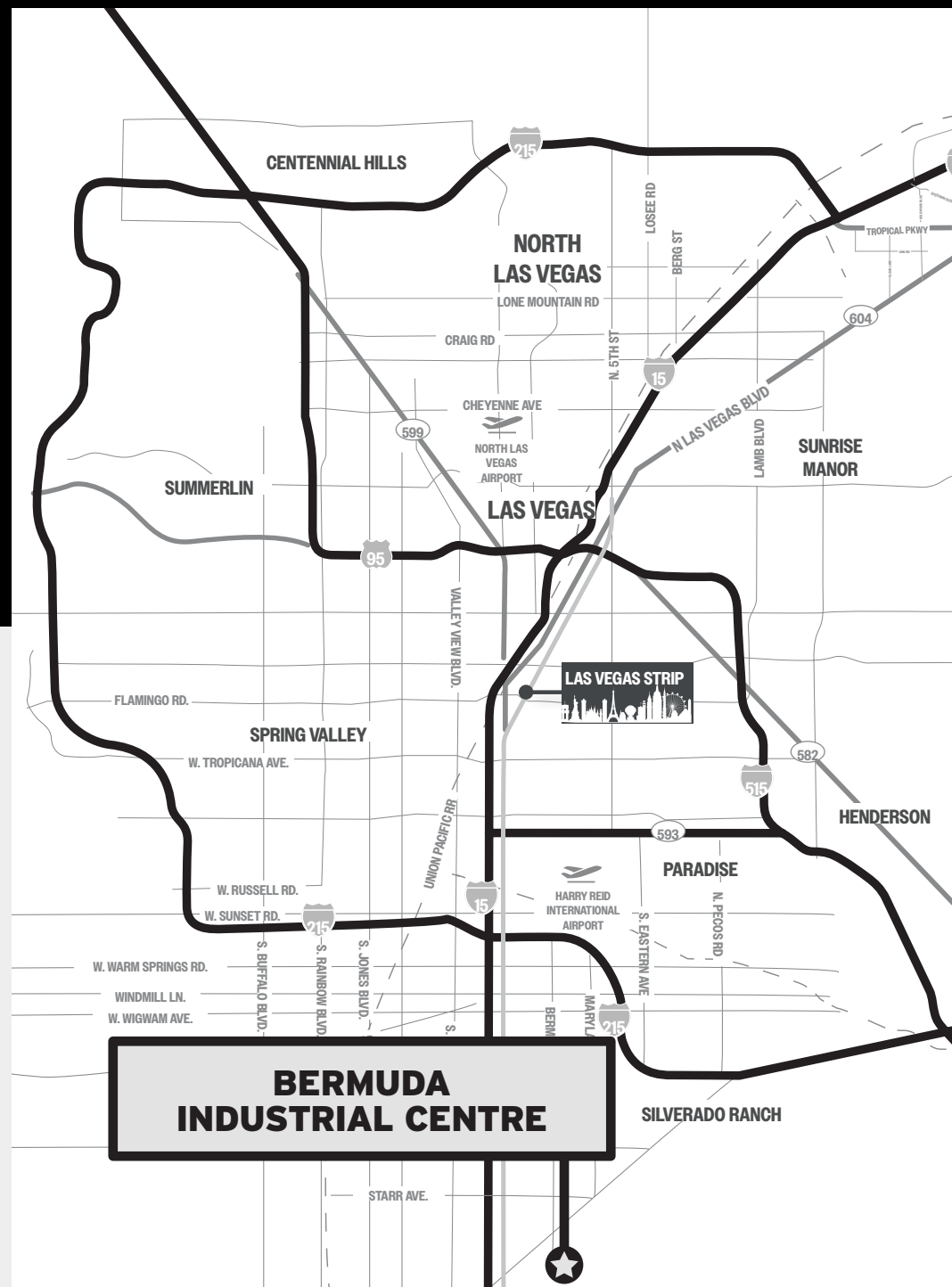
LOCATION HIGHLIGHTS

- + Located in the highly desired Henderson submarket
- + ± 1.0 miles to St. Rose Pkwy.
- + ± 0.5 miles to Volunteer Blvd.
- + ± 1.7 miles to I-15
- + Henderson Jurisdiction
- + Zoning: IP (Industrial Park)



PROPERTY HIGHLIGHTS

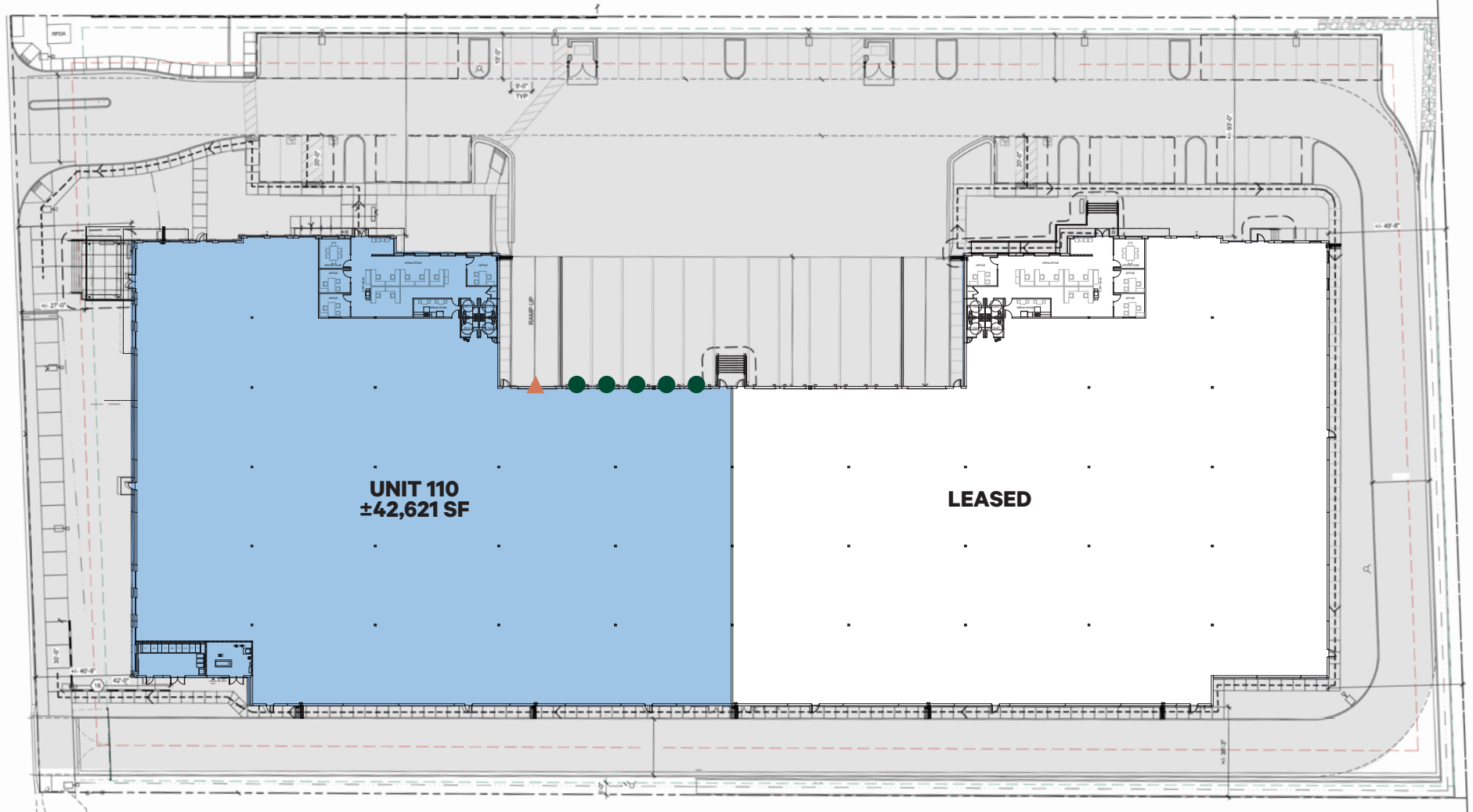
- + State-of-the-art industrial facility totaling 85,947 SF
- + $\pm 42,621$ SF available
- + Front loading configuration
- + 32' minimum clear height
- + ESFR sprinkler systems
- + LED lighting and evaporative cooling system within warehouse
- + HVLS fans
- + Mechanical pit levelers
- + Edge-of-dock levelers



OVERALL SITE PLAN



BERMUDA RD

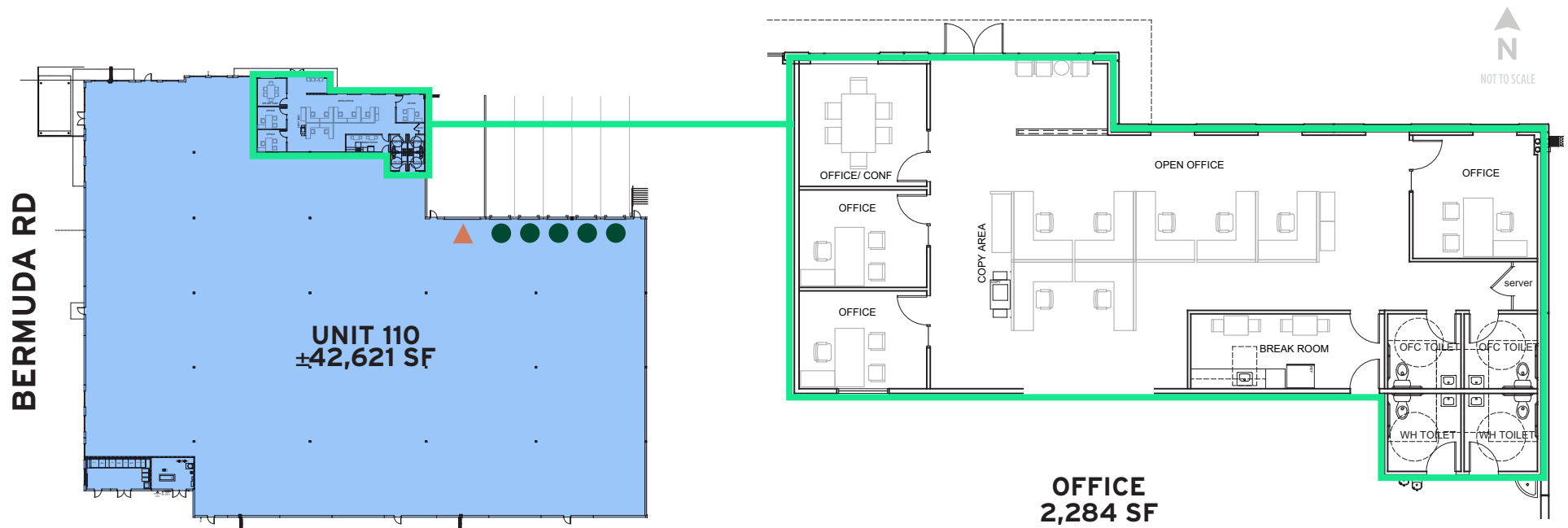


GRADE DOOR



DOCK DOOR

* NOT TO SCALE



SUITE 110

42,621 SF

- + Office SF: 2,284
- + Dock Doors: 5 (9' x 14')
- + Dock Packages:
 - Two (2) mechanical pit-levelers
 - Three (3) edge-of-dock levelers
- + Grade Doors: 1 (12' x 14')

▲ GRADE DOOR ● DOCK DOOR * NOT TO SCALE

- + Power: 1,500 Amps, 277/480 V, 3-Phase
- + Cooling: Evaporative cooling
- + Fans: Two (2) HVLS Fans
- + Sprinklers: ESFR

AMENITY MAP

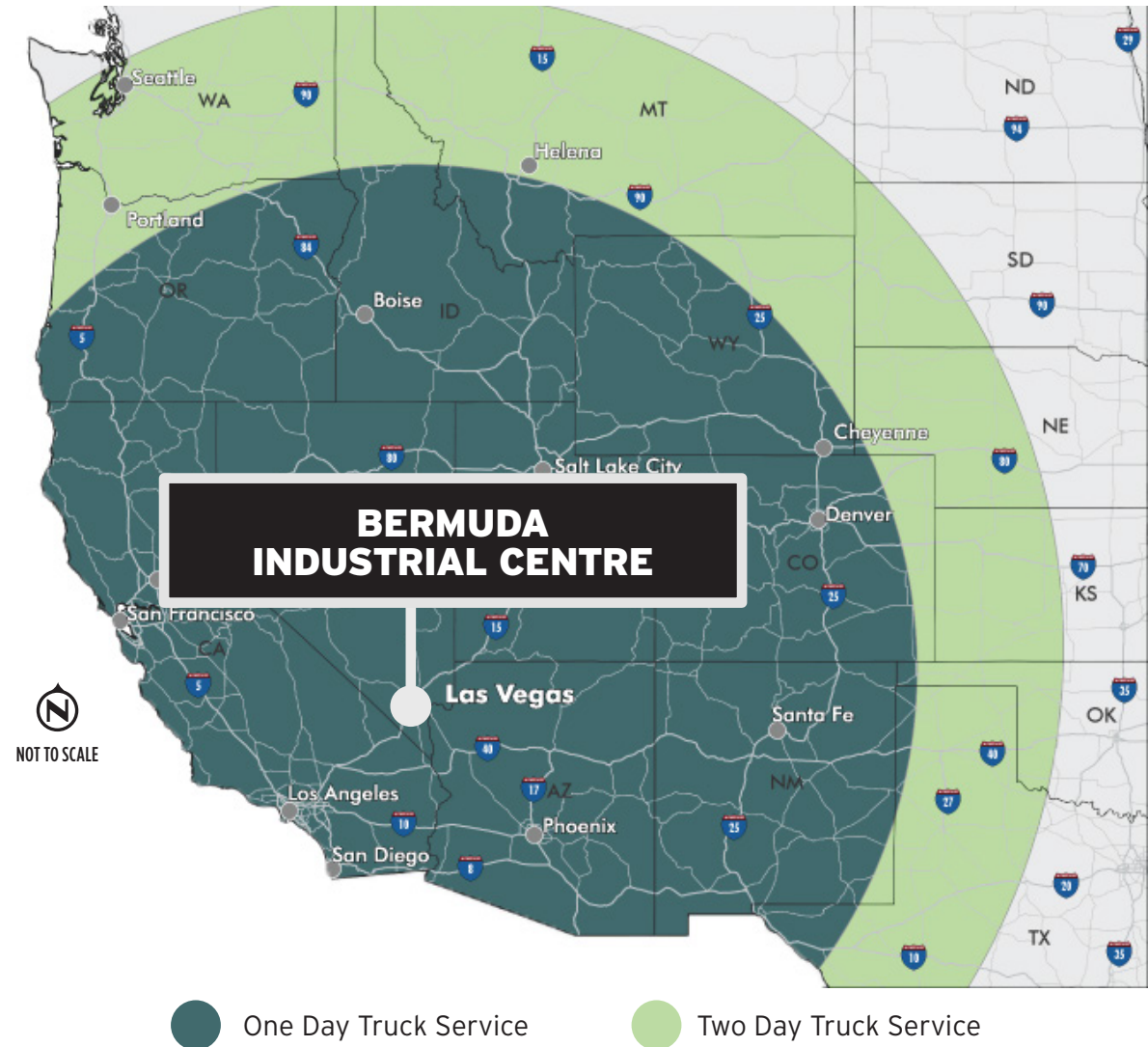


LOCATION & TRANSPORTATION

- + I-15 interchange is ± 1.7 miles from subject property
- + I-215 interchange is ± 5.0 miles from subject property
- + US-95 interchange is ± 10.0 miles from subject property
- + McCarran Airport is ± 12.0 miles from subject property
- + The Las Vegas Strip is ± 12.0 miles from subject property

SHIPPING & MAILING SERVICES

- + FedEx Freight - ± 9.4 Miles
- + FedEx Ship Center - ± 4.5 Miles
- + FedEx Air Cargo - ± 9.4 Miles
- + FedEx Ground - ± 1.0 Miles
- + UPS Freight Service Center - ± 9.4 Miles
- + UPS Customer Center - ± 6.6 Miles
- + UPS Air Cargo - ± 10.0 Miles
- + US Post Office - ± 3.0 Miles



TRANSIT ANALYSIS FROM LAS VEGAS, NV

	Distance (mi.)	Time (est.)		Distance (mi.)	Time (est.)
Los Angeles, CA	265	3 hrs, 54 min	Boise, ID	634	9 hrs, 31 min
Phoenix, AZ	300	4 hrs, 39 min	Santa Fe, NM	634	9 hrs, 8 min
San Diego, CA	327	4 hrs, 46 min	Denver, CO	752	10 hrs, 45 min
Salt Lake City, UT	424	5 hrs, 50 min	Cheyenne, WY	837	11 hrs, 52 min
Reno, NV	452	6 hrs, 55 min	Helena, MT	907	12 hrs, 31 min
San Francisco, CA	562	8 hrs, 20 min	Portland, OR	982	15 hrs, 44 min
Sacramento, CA	565	8 hrs, 14 min	Seattle, WA	1,129	16 hrs, 52 min

BERMUDA INDUSTRIAL CENTRE

12200 BERMUDA RD., HENDERSON, NV 89044

CONTACTS

SEAN ZAHER, SIOR
SENIOR VICE PRESIDENT
+1 702 369 4863
SEAN.ZAHER@CBRE.COM
LIC. S.0175473

JAKE HIGGINS, SIOR
SENIOR VICE PRESIDENT
+1 702 369 4844
JAKE.HIGGINS@CBRE.COM
LIC. S.0176473

KELSEY HIGGINS
SENIOR ASSOCIATE
+1 702 369 4814
KELSEY.HIGGINS@CBRE.COM
LIC. S.0192524



CBRE

© 2025 CBRE, Inc. All rights reserved. This information has been obtained from sources believed reliable but has not been verified for accuracy or completeness. CBRE, Inc. makes no guarantee, representation or warranty and accepts no responsibility or liability as to the accuracy, completeness, or reliability of the information contained herein. You should conduct a careful, independent investigation of the property and verify all information. Any reliance on this information is solely at your own risk. CBRE and the CBRE logo are service marks of CBRE, Inc. All other marks displayed on this document are the property of their respective owners, and the use of such marks does not imply any affiliation with or endorsement of CBRE. Photos herein are the property of their respective owners. Use of these images without the express written consent of the owner is prohibited.

